

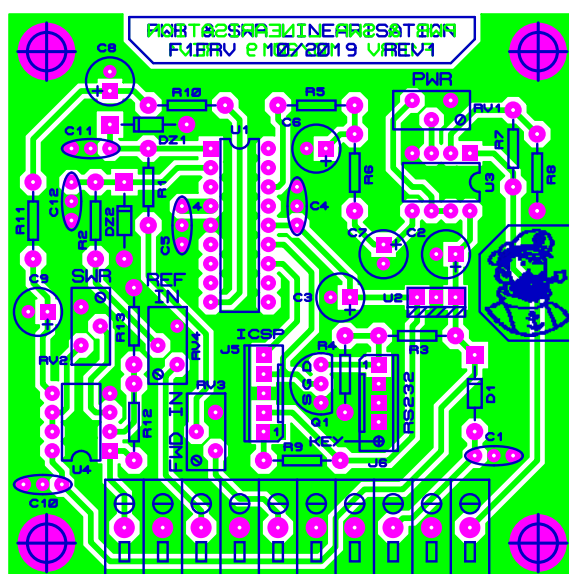
THIS CIRCUIT IS MADE FOR POWER AND AUTOMATIC SWR DISPLAY ON STANDARD VOLTMETERS, INSTEAD OF SPECIAL METERS WITH QUADRATIC SCALE FOR POWER, & LOGARITHMIC SCALE FOR SWR.

SCALE: 0-10V FOR SWR 10/1 MAXI. 1V = SWR 1/1, 10V = SWR 10/1 (SWR 10/1 = ~67% OF REFLECTED POWER)
SCALE: 0-1 V FOR 1 kW, 0-2 V FOR 2 kW, 0-3 V FOR 3 kW, 0-5 V FOR 5 kW, 0-10 V FOR 10 kW, 0-20 V FOR 20 kW
LOW COST 85C1 VOLTMETERS WITH SCALES 1, 2, 3, 5, 10 OR 20 V DC CAN BE USED.

**POWER CURVE LINEARISATION & AUTOMATIC SWR
TO BE USED DOWNSTREAM SWR BRIDGE**

DATE: 25/10/19 REV: 1 PAGE: 1/2
 BY: f1frv@sfr.fr
 DOC N°: AMATEUR RADIO

DATE: 10/2019 REV: 1
BY: f1frv@sfr.fr
DOC N°: AMATEUR RADIO



SWR OUTPUT 0-10 V
GND
REF PWR INPUT
GND
FWD PWR INPUT
GND
-V SUPPLY IN
+V SUPPLY IN
GND
PWR OUTPUT

R4 NOT USED FOR SUPPLY 12-14 V
R4 USED ONLY FOR SUPPLY 24 -28 V

